

iii **LOWRISE BRACED CORE MULTIFAMILY_VOLUMETRIC + PANELIZED | LATERAL FENESTRATED**

Midrise _ Lowrise Multifamily Prototype. Braced Core. Lateral Fenestration. Volumetric. 5 Story assembly of factory built 1250 gsf 3 br enclosure, 5 du's per floor, 6,250 gsf net living space per floor. Wood volumetric, CRS, Steel volumetric. CMU cores for lowrise. Building assemblies adjoined, linked, courtyards, to 8 stories CRS. Kitchens outboard. Design model presents as more open and less costly than transverse fenestrated models (V, below) with suitable engineering of exterior facing steel enclosure walls & floor/ceiling diaphragms. *Design for Lowrise Senior Community Living, Buffalo Grove, IL 2023.*

Comparative: Photo right Steel CFS similar scale. Copyright 2025 Eisen Group

Stephen Synakowski Architects & Planners dba

TectonX

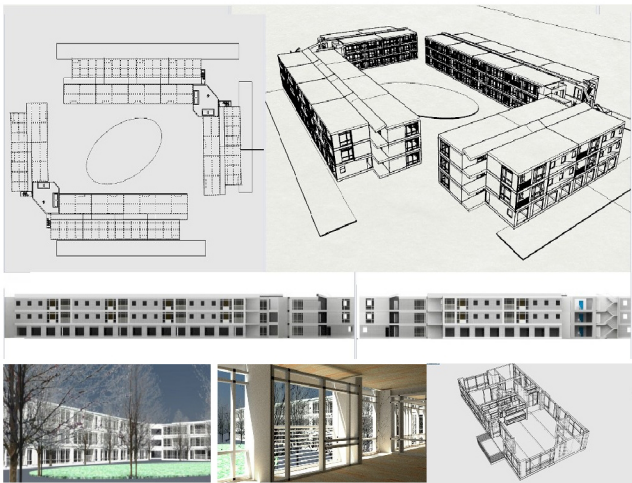
150 88th Street, Ste D4

Brooklyn, NY

609.213. 4733

Page 4 MODULAR SME OUTLINE Draft_10.07.25 © 2025 Stephen Synakowski





iv **LOWRISE CORRIDOR MULTIFAMILY_VOLUMETRIC + PANELIZED | LATERAL FENESTRATED |**
GATED COMMUNITY, COURTYARD | SENIOR, MIXED USE | TO 5 STORIES WOOD, 8 STORIES CRS

Lowrise Multifamily Prototype. Corridor. Volumetric or panlized.

3-5 Story assembly of factory built 1250 gsf 1- 3 br enclosures. Wood volumetric, SIPs, CRS, Steel volumetric. Integrated dedicated garages. Senior gated communities. Mixed use potential with commercial at ground floor. Dedicated interior landscapes. Exurban. *Design for gated Senior Community Living, Arlington Heights, IL 2023.*

Comparative: Photo right. Steel CFS similar scale. Copyright 2025 EisenGroup

Stephen Synakowski Architects & Planners dba

TectonX

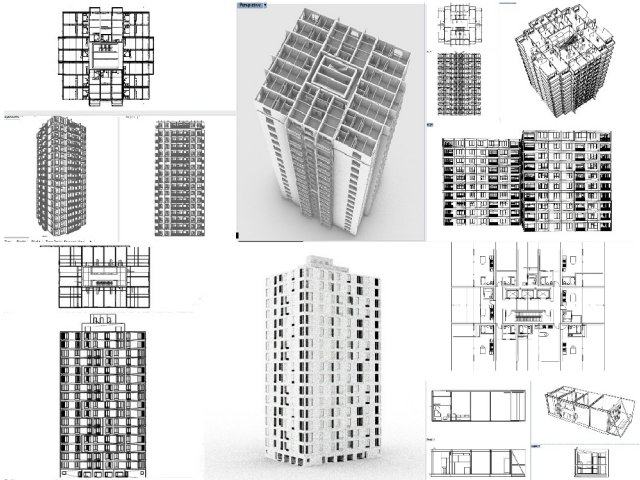
150 88th Street, Ste D4

Brooklyn, NY

609.213. 4733

Page 5 MODULAR SME OUTLINE Draft_10.07.25 © 2025 Stephen Synakowski





V MIDRISE BRACED CORE MULTIFAMILY_VOLUMETRIC | TRANSVERSE FENESTRATED | STUDIO TO 3BR | COMMERCIAL PODIUM, PARKING | TO 5 STORIES WOOD, 15 STORIES STEEL

Midrise Multifamily Prototype. Braced Core. Transverse Fenestration. Volumetric.

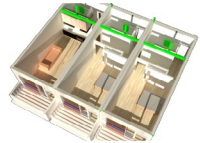
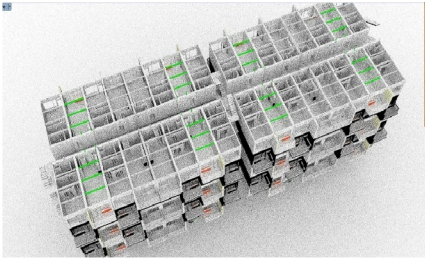
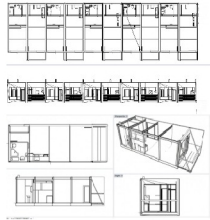
5 to 15 stories using adjoined factory built steel framed transverse fenestrated standard enclosures, ea approx 440 gsf, 150" (12'6") by 420" (35'-0") deep. Approx. 10,560 gsf / floor. Braced core arranged lowrise, SIPs or cold steel panels, braced core arranged midrise, steel volumetric frame. Kitchens inboard. Various combinations of studio, 3 bed, 2 bed, 1 bed. Commercial podium or wrap incl parking garage. *This steel frame transverse fenestrated volumetric construction model being used in the UK, per Mark Lawson SE.*

**Stephen Synakowski Architects & Planners dba
TectonX**

150 88th Street, Ste D4
Brooklyn, NY
609.213.4733

Page 6 MODULAR SME OUTLINE Draft_10.07.25 © 2025 Stephen Synakowski





vi **LOWRISE CORRIDOR MULTIFAMILY_VOLUMETRIC** | TRANSVERSE FENESTRATED | STUDIO TO 3 BR | TO 5 STORIES WOOD, 8 STORIES CRS

Lowrise Multifamily Prototype. Volumetric or panelized.

Up to 5 stories wood, 8 stories cold steel. Units approx 440 gsf, approx 150" (12'6") wide, 420" (35'-0") deep. Various combinations of studio, 1, 2 and 3 br. Potential use with garage commerical podium or wrap. Suburban lowrise multifamily communities, transportation oriented development, mixed use ith shopping, etc.. Commerical podium or wrap incl steel or concrete parking garage below. *Current design delivery model of much volumetric West Coast US, incl. CA.*

Stephen Synakowski Architects & Planners dba

TectonX

150 88th Street, Ste D4

Brooklyn, NY

609.213. 4733

Page 7 MODULAR SME OUTLINE Draft_10.07.25 © 2025 Stephen Synakowski

